

**COOPERS BREWERY FOUNDATION  
2015 ANNUAL REPORT**

*Brewing support  
for the community*



FOUNDATION 

*Brewing support for the community.*



## CHAIRMAN'S REPORT

*It is my pleasure to report on the Coopers Brewery Foundation activities for the 2014-2015 year.*



**I make special mention at the beginning of this report of the people who contribute so much to our Foundation. Firstly, to note the sad passing on Christmas Eve 2014 of Matthew Cooper, a Governor who served on the Board for more than three years. Matthew lost his battle with cancer after a long struggle, but his commitment and passion for the Foundation never diminished during that fight. Donations made in Matthew's memory exceeded \$20,000 and the proceeds were donated to Mary Potter Hospice. I acknowledge and thank Matthew for his service and generosity, and our sympathy goes to Stefany, Victoria and Ursula.**

Former Governor of South Australia, Kevin Scarce, graciously accepted the Board's invitation to fill the vacancy in September left by Rex Keily, and I take the opportunity once again to thank Rex for his service since the inaugural meeting in 2006. We were also delighted that Jo Cooper accepted the Board's invitation in March to be a Patron of the Foundation, acknowledging her strong support and generosity to the cause.

This year has seen the Foundation distribute almost \$3.1 million in charitable funds, since our first donation in March 2007. Over the past financial year, the Foundation distributed \$579,600 to 31 Australian charitable projects, including over \$111,000 to Catherine House, this year's recipient of the seventh Golf day.

The Shareholder Appeal for 2015 raised \$31,900 to support Cure 4 Cystic Fibrosis. The Adelaide CF Gene Therapy Research Group will aim to progress this research to

human clinical trials, in pursuit of a gene therapy-based cure for the disease.

In addition, members of staff generously donated over \$15,000 from regular salary deductions, and as a suitable recipient of those funds, the Governors selected Southern Cross Kids Camps, assisting children to overcome the cycle of abuse. Our suppliers and Friends have also continued to support the Foundation with donations of \$210,000, and special mention goes to Bill and Jo Cooper, Castlegate James and Allianz.

The Foundation continues to benefit from the fundraising efforts of the dedicated team at Coopers, including tours, which raised over \$47,000, and recycling of waste material, generating over \$61,000. Other income included donations from Beerenberg Farm relating to proceeds from the sale of Coopers Ale Barbeque Sauce, and a staff raffle which raised \$4,600.

A highlight of the year was the concert held at the Brewery in February featuring Sting and Paul Simon. Coopers committed the venue hire proceeds of \$85,000 and, together with internal fundraising for the event, a \$100,000 donation was shared between the Hutt St Centre and St John's Youth Services, to help continue their valuable work on the streets of Adelaide.

Following the total donation of approximately \$3,000,000 made by Coopers Brewery over the past three years, the Investment Committee continues to oversee the management and investment of funds in a very challenging market. As Chair of that Committee I would like to thank Haydn Duffield, Jim Hazel, Michael Shearer, Simon Hele, Rob Patterson and Rod Gillies for



Matthew Cooper



Prime Minister's Community Business Partnership

their time and efforts. The Committee was further assisted by Financial Controller Brad Grunert when he joined as Secretary in March, following Jim's retirement. The income raised from the Investment Fund pays the Executive Officer's part-time salary and the surplus is reinvested.

Last September, I was appointed to the reinstated Prime Minister's Community Business Partnership. This small group of like-minded business philanthropists and politicians are charged with the aim to promote philanthropic giving, volunteering and investment in Australia over the next three years. It is wonderful recognition of the work the Foundation is doing, and I am honoured to represent the family and Foundation in such a way.

Our Executive Officer Ginta Orchard and I completed the annual corporate governance review as part of the Foundation's internal audit. Once again I want to acknowledge the efforts Ginta has made and advice she has given, as well as the voluntary work she provides to the Foundation.

Our auditors KPMG have conducted the audit of the accounts pro bono and I thank Scott Fleming for his generosity and the team for their assistance. Finally, I wish to thank the Board of Governors and patrons for their contribution and support, ensuring the Mission and objectives of the Foundation are achieved.

*Melanie Cooper*

Melanie Cooper  
Chair

## THE GOVERNORS OF THE FOUNDATION ACT IN AN HONORARY CAPACITY

### GOVERNORS



From left: Melanie Cooper, Haydn Duffield, Tim Cooper AM, Rear Admiral The Honourable Kevin Scarce AC CSC RAN (Rtd), Leanne Gelly.

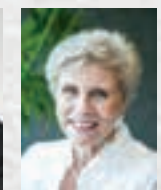
### PATRONS



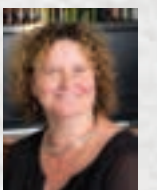
Bill Cooper  
OAM



Glenn Cooper  
AM



Jo Cooper



Ginta Orchard

### EXECUTIVE OFFICER





## CURE4CF FOUNDATION

### Gene therapy research

"Cystic Fibrosis (CF) is the most common, life-limiting, genetically acquired disease in the developed world. Those with CF live with a chronic multi-organ disease that affects the gut, liver, pancreas, and, most noticeably, the lungs. CF sufferers face a constant struggle just to breathe. The average life expectancy of someone with CF is only 38 years.

The most advanced research in the world seeking a cure for CF is happening right here in Australia. The Adelaide CF Gene Therapy Research Group, based at the Allan Scott CF Research Laboratory at the Women's & Children's Hospital, has delivered a number of world-first outcomes in the pursuit of a gene therapy based cure for the airway disease caused by cystic fibrosis. The aim is to fast-track the work of the research team to the point of human clinical trials."

Funding for this project is provided in the 2015-16 financial year.

## SOUTHERN CROSS KIDS' CAMPS

### Overcoming the cycle of child abuse

"The significance of giving a child the one-to-one attention of an adult who cares cannot be emphasised enough. SCKC's safe week of happy memories helps each child overcome the trauma of abuse and neglect, and to develop greater self-esteem, stronger relationships and improved school participation, which in turn enables them to reach their full potential in life.

The project aims to enable children in welfare and foster care to overcome abuse, neglect and domestic violence, to enjoy life as a kid again. The children attending the camps return refreshed, revitalised and strengthened after such a special camp. The camp provides access to positive role models and experiences which can help motivate students to want to achieve more at school and seek better lives for themselves."



## IN MEMORIAM



### Matthew Simon Cooper

9/10/63 – 24/12/14

All members of the Cooper family, the Coopers Foundation and friends were deeply saddened by the passing of Foundation Governor Matthew Cooper in December 2014, following a long illness.

Matthew joined the brewery in 1994, and in late 2013 received his 20-year service award.

In 2011, he was appointed as a Governor of the Coopers Brewery Foundation, a position he held with passion. His work in researching and investigating funding applicants was greatly appreciated by the Foundation Board.

Despite his illness he remained active in the Foundation, including welcoming Kevin Scarce to the Foundation Board on 9 December 2014, just weeks before his passing.

He was an enthusiastic and valuable contributor to the work of the Foundation and is sadly missed.

## MARY POTTER FOUNDATION

The Foundation would like to thank all who donated to the Mary Potter Hospice in memory of Foundation Governor Matthew Cooper. Over \$20,000 was raised to help the hospice provide pain therapy and pressure care mattresses in its palliative care unit.







## COOPERS BREWERY FOUNDATION 7TH GOLF DAY RAISED \$111,448 FOR CATHERINE HOUSE.

Held on Friday the 1st of May 2015, the seventh Coopers Foundation Golf Day was the most successful in the event's history. A record 136 players, 34 teams and 12 corporate hole sponsors helped to raise over \$110,000 for Catherine House.

Our hole sponsors provided a variety of entertainment, activities and catering on the course, creating a festive atmosphere for the golfers. The dinner later that evening was full of laughs with entertainment provided by cricket commentator Kerry O'Keeffe. Appreciation also goes to Nathan Casserly who conducted a lively and very successful auction, thanks to the enthusiastic bidding and generosity of the guests.

The Foundation was proud to support the valuable services of Catherine House through the Annual Golf Day. The outstanding success of the event can only be achieved by the wonderful support and generosity of individuals and companies, through their sponsorship, in-kind support, participation and donations.

### Sponsors

Adelaide Casino  
Adelaide Convention Centre  
Adelaide Festival Centre  
Allianz  
ANZ  
Cold Logic  
Corporate Traveller

Ecolab  
Kooyonga Golf Club  
KPMG  
Macquarie  
One Toyota  
Premium Beverages  
Topline Promotions

### Supporters

Adelaide Entertainment Centre  
Alice Healy Photography  
Ahrens — Stefan & Leanne  
Beerenberg  
Charlesworth Nuts  
Chris Jarmer Events  
Cooper, Bill & Jo  
Concept Air Conditioning  
Cruickshank Rapid  
Dhaba At The Spice Kitchen  
Enzo's  
Espresso Essential  
Events Corp Signage  
Finsbury Green  
Five AA  
Ginza Miyako  
Gordon Pickard  
Haigh's Chocolates  
InterContinental Adelaide

KWP!  
Mayfair Hotel  
Nippy's  
On The Run  
Osmoflo — Marc & Annie Fabig  
Ouwens Casserly Real Estate  
Price Screen Process  
RM Williams  
Qantas  
San Remo  
Schweppes  
Sealink  
Shearer, Michael & Jo  
Skycity Darwin  
Spring Gully  
Stamford Grand Adelaide  
Telstra  
Veolia  
Vili's  
Yalumba



### CATHERINE HOUSE

#### *Emergency accommodation*

"Supporting accommodation for women experiencing homelessness, assisting them to make the necessary changes in their lives.

Since 1988, Catherine House has helped women experiencing homelessness to transform their own lives and, in turn, improve the long-term opportunities for their children.

As the only supported accommodation provider for women aged over 18 in South Australia, Catherine House's 16 homes throughout Adelaide, provide a safe, comfortable environment for up to 48 women each night, with around 350 arriving at the door of the emergency program each year.

Many more turn to Catherine House for assistance in other vital areas such as support for mental illness, drug and alcohol problems, gambling, domestic violence, relationship and family breakdown."





## HELPING TO BRIDGE TROUBLED WATERS

WHEN YOU'RE DOWN AND OUT  
WHEN YOU'RE ON THE STREETS, YES  
WHEN EVENING FALLS SO HARD  
WELL, I WILL COMFORT YOU

Bridge Over Troubled Waters

*Paul Simon*

Two of the world's most famous, and socially responsive performers, Paul Simon and Sting, thrilled a crowd of around 11,000 on the lawns of Coopers Brewery. This helped the Foundation raise more than \$100,000 to assist South Australia's most vulnerable.

The concert opened on a beautiful February afternoon with the talented Sarah Blasko, before the two international stars treated the audience to an evening of iconic melodies and eternal favourites from their own back-catalogue including *Brand New Day*, *You Can Call Me Al*, and *Message in a Bottle*, as well

as sublime interpretations of numbers that have inspired them over their careers.

Importantly for the Foundation, the proceeds from venue hire, together with staff contributions were donated to two of South Australia's key, frontline charities: Hutt St Centre and St John's Youth Services, to help in their work with the state's homeless and disadvantaged.

As both Sting and Paul Simon regularly campaign to raise awareness of the plight of homeless people in our cities, the outstanding concert was an ideal fit for the Foundation's Mission and objectives.



### HUTT ST CENTRE

#### *Rebuilding lives*

"We started a pathways to employment program just over a year ago with a huge annual goal to secure employment for 50 of our clients. Last month alone we achieved 30 employment outcomes, and a number of the clients were actually employed to help set up and pack down the Paul Simon & Sting concert which is even more significant."

### ST JOHN'S YOUTH SERVICES

#### *Providing accommodation and related services to homeless young people*

"Helping break the cycle of homelessness for young people in SA and helping ensure all young people make a place they call home."





# Mission statement

THE COOPERS BREWERY FOUNDATION AIMS TO IMPROVE AND PROTECT THE QUALITY OF LIFE OF AUSTRALIANS, BY PROVIDING SUPPORT TO CHARITABLE ORGANISATIONS WITH RECOGNISED STRENGTHS IN MEDICAL RESEARCH AND HEALTH CARE, IN YOUTH EDUCATION AND AGED CARE, AND IN FOSTERING FAMILY AND COMMUNITY SUPPORT BASED ON CHRISTIAN VALUES.

## SECOND CHANCES SA Birthday presents for children

“Each month, around 30 children of prisoners receive a gift from their imprisoned parent so they know they are not forgotten. A birthday is a special time but a lonely one when mum or dad are away.”



## BEDFORD PHOENIX Boot camp

“Bedford Phoenix has been able to engage Exercise Physiologists to develop individualised tailored ‘Bootcamp’ programs for people with a disability. For many of the participants, this has been their first exposure to organised, structured exercise that focuses on improving mobility and flexibility.”



DIALYSIS ESCAPE LINE AUSTRALIA



ASBESTOS DISEASES SOCIETY OF AUST



ROYAL SOCIETY FOR THE BLIND SA



SIDS AND KIDS SA



BRIGHTER FUTURE 4 KIDS FOUNDATION



YELLOW DOOR FOUNDATION



CONCERN AUSTRALIA MINISTRY



BIBLE SOCIETY AUSTRALIA

## BENEFICIARIES

### MEDICAL RESEARCH & HEALTH CARE

<b>CAPTAIN COURAGEOUS FOUNDATION</b>	\$10,000
Diamond Black-Fan Anaemia Bone Marrow research program	
<b>DIALYSIS ESCAPE LINE AUSTRALIA</b>	\$11,100
purchase of a Blood Analyser for use in temporary dialysis units	
<b>HEART KIDS OF SA</b>	\$13,500
Playgroup education program	
<b>LEUKAEMIA FOUNDATION</b>	\$41,600
Young Bloods program	
<b>MARY POTTER FOUNDATION</b>	\$20,615
Pain therapy and pressure care mattresses	
<b>MOTOR NEURONE DISEASE OF SA</b>	\$1,133
Ice bucket challenge	
<b>SIDS AND KIDS SA</b>	\$13,000
Community safe sleeping program	
<b>YELLOW DOOR FOUNDATION</b>	\$4,177
(Nurselink Foundation) Equipment for education programs	

### WELFARE & AGED CARE

<b>EATING DISORDERS ASSOC OF SA</b>	\$11,940
Workshops and information sessions	
<b>HELP A FRIEND CLUB TOOWOOMBA</b>	\$15,000
Transitional community housing project	
<b>HUTT ST CENTRE</b>	\$50,000
Rebuilding lives	
<b>ROYAL SOCIETY FOR THE BLIND SA</b>	\$7,545
Expansion of the adaptive technology centre	
<b>SOUTHERN CROSS KIDS' CAMPS</b>	\$15,000
Overcoming the cycle of child abuse in Casey & Knox	
<b>ST JOHN'S YOUTH SERVICES</b>	\$50,000
Providing accommodation and related services to homeless young people	
<b>SUMMER FOUNDATION</b>	\$15,000
Ambassador program	
<b>UNIVERSITY OF ADELAIDE</b>	\$20,000
Ageing Well Think Tank	

### FAMILY & COMMUNITY SUPPORT

<b>BIBLE SOCIETY AUSTRALIA</b>	\$15,000
The Bible in time of war – 2015 celebration centenary of Gallipoli	
<b>BRIGHTER FUTURE 4 KIDS FOUNDATION</b>	\$14,975
Shoes & Socks 4 Kids program	
<b>CATHERINE HOUSE</b>	\$111,448
Emergency accommodation program	
<b>CENTRAL DOMESTIC VIOLENCE SERVICE</b>	\$10,000
Property development project	
<b>CYSTIC FIBROSIS QUEENSLAND</b>	\$10,000
Webinar support program	
<b>SECOND CHANCES SA</b>	\$6,300
(Prison Fellowship Australia SA) Birthday presents for children of prisoners	
<b>VERY SPECIAL KIDS</b>	\$7,500
Music therapy program	
<b>WOMADELAIDE FOUNDATION</b>	\$5,000
Access for all	

### YOUTH EDUCATION

<b>ASBESTOS DISEASE ASSOC OF AUST</b>	\$6,580
Asbestos awareness program training booklet	
<b>BARKUMA</b>	\$20,000
State transition program	
<b>BEDFORD PHOENIX</b>	\$7,350
(Phoenix Society) Disability Boot Camp	
<b>BOYS' TOWN ENGADINE</b>	\$19,960
Learning for life camps Dunlea Centre	
<b>CONCERN AUSTRALIA MINISTRY</b>	\$15,178
Equipment for values for life program	
<b>OPERATION FLINDERS FOUNDATION</b>	\$10,000
A new direction for young people at risk	
<b>WHITELION</b>	\$20,728
Right turn mentor driving program	





VERY SPECIAL KIDS  
*Music therapy program*

“Provides a safe space for some very sick children to express themselves. For the non-verbal kids, this is a way for them to communicate – and it’s simply magical to watch.”

MOTOR NEURONE DISEASE OF SA  
*Ice bucket challenge*

“The MND Australia Ice Bucket Challenge Grant will provide up to \$350,000 per year for a novel three-year research project that aims to understand the causes of sporadic MND and seeks to find a treatment for the disease.”



BARKUMA  
*State transition program*

“The Transition Program is making a real difference to the lives of students with disability or learning difficulties. It provides our students with an opportunity to successfully transition from school to work or further study. Coopers donation to the program ensures that students are able to develop vital skills required for future success.”



FINANCIAL STATEMENTS SUMMARY

Statement of Comprehensive Income	2015 \$	2014 \$
Revenue		
Revenue from ordinary activities	1,153,889	1,020,146
TOTAL Revenue	1,153,889	1,020,416
Expenses		
Bank Fees	(150)	(70)
Administrative expenses	(41,400)	----
TOTAL Expenses	(41,550)	(70)
Net surplus from ordinary activities	1,112,339	1,020,346
Donations made	(579,629)	(433,200)
Surplus/(deficit) for the year	532,710	587,146
Other comprehensive income	(37,417)	----
Total Comprehensive Income/(loss) for the period	495,293	587,146

Statement of Financial Position	2015 \$	2014 \$
CURRENT ASSETS		
Cash and Cash Equivalents	655,579	2,644,047
Trade and other receivables	5,668	----
Perpetual fund	2,478,409	316
TOTAL CURRENT ASSETS	3,139,656	2,644,363
TOTAL LIABILITIES	----	----
NET ASSETS	3,139,656	2,644,363
EQUITY		
Accumulated Funds	3,177,073	2,644,363
Fair value reserve	(37,417)	----
TOTAL Equity	3,139,656	2,644,363

Statement of Cash Flows	2015 \$	2014 \$
CASH FLOWS FROM ORDINARY ACTIVITIES		
Cash Receipts		
Donations and charitable support	1,066,733	948,620
Cash Payments		
Donations made	(579,629)	(433,200)
Payments for administrative services	(41,400)	----
Net Cash Payments	(621,029)	(433,200)
Net Cash (paid) from Ordinary Activities	445,704	515,420
CASH FLOWS FROM INVESTING ACTIVITIES		
Dividends received	13,474	----
Interest received	68,330	71,999
Acquisition of investments	(2,515,826)	----
Bank Fees	(150)	(70)
Net Cash from investing activities	(2,434,172)	71,929
Net Increase /(decrease) in cash	(1,988,468)	587,349
Cash and cash equivalents at 1 July 2014	2,644,047	2,056,698
Cash and cash equivalents at 30 June 2015	655,679	2,644,047

During the year, the Foundation received a donation of \$500,000 (2014: \$500,000), from Coopers Brewery Limited which is included within revenue from donations. This sizeable donation is to be applied by the Foundation to the Perpetual Fund, the income from the corpus is intended to grow to ensure a strong financial future for the Foundation.

Statement of Changes in Equity	Fair value Reserve \$	Accumulated funds \$	Total Equity \$
Balance at 1 July 2013	---	2,057,217	2,057,217
Total comprehensive income for the period			
Surplus for the year	---	587,146	587,146
Balance at 30 June 2014	---	2,644,363	2,644,363
Balance at 1 July 2014	---	2,644,363	2,644,363
Total comprehensive income for the period			
Surplus for the year	---	532,710	532,710
Net changes in fair value of financial assets	(37,417)	---	(37,417)
Balance at 30 June 2015	(37,417)	3,177,073	3,139,656

Revenue from Ordinary Activities	2015 \$	2014 \$
Donations	828,965	732,148
Fundraising Events	18,487	10,283
Golf Day	108,198	95,005
Recycling	61,194	59,668
Speaking Engagements	2,000	9,336
Tours	47,889	42,180
Interest on perpetual fund	66,789	70,595
Dividends from perpetual fund	13,474	----
Imputation credits	5,620	----
Interest other	1,273	1,201
TOTAL	1,153,889	1,020,416

The Investment Committee continues to oversee the management and investment of funds in a very challenging market.





## HEART KIDS OF SA *Playgroup education program*

"By providing safe, social environments, HeartKids SA playgroups aim to engage families with children under five years who have chronic heart disease, and who are unable to access a community playgroup due to their low immunity levels."

## DIALYSIS ESCAPE LINE AUSTRALIA

### *Blood analyser for dialysis machine*

"We set up temporary dialysis units at resorts and even on cruise ships, which allows patients to have a break without the inevitable difficulties and stressful experience of organising treatment in another location."



## CAPTAIN COURAGEOUS FOUNDATION

### *Diamond Black-Fan Anaemia Bone Marrow research program*

"In two short years the national collaborative medical research program, funded by the Captain Courageous Foundation, has made significant inroads into understanding the biology that causes Bone Marrow Failure diseases, with the potential for new therapies in sight."



## CENTRAL DOMESTIC VIOLENCE SERVICE

### *Property development project*

"The support from my sister and friends helped me stay away – the support and education from the DV Service has helped me stay strong and able to live again. Now I am at the unit and my son is doing great."



## WOMADELAIDE FOUNDATION

### *Access for all*

"Isaac was able to spend the day with one of his best mates whose family also received tickets from you. To see them doing what teenagers love to do and to witness the lasting impressions they left with a few wonderful and engaging people we randomly met was a great moment from the perspective of a parent."



## FRIENDS OF THE FOUNDATION

**WE WOULD LIKE TO RECOGNISE OUR FRIENDS WHO HAVE GENEROUSLY CONTRIBUTED THIS YEAR, BASED ON ACCUMULATIVE GIVING. 100% OF YOUR DONATION WAS DISTRIBUTED TO WORTHY AUSTRALIAN CHARITIES.**

### *Platinum \$100,000+*

Castlegate James  
Cooper, Bill & Jo

Coopers Brewery

### *Gold \$10,000 to \$99,999*

Allianz Australia  
Beerenberg Farm  
Cooper, Gwen  
Cooper, Stefany  
Cooper, Tim & Barbara

Cooper, Glenn & Elspeth  
Holton, Graham  
Khorasane, Alison  
Renolds, Ray & Mary  
WIN Television

### *Red \$5,000 to \$9,999*

Botten, Lisa & Russell  
Cooper, Melanie  
Cooper, Peter & Rosemary  
Cooper, Verity  
Conderman, Lyn  
Corporate Conversation

Fahey, Simon  
Markus Pty Ltd  
McCarthy, Barbara  
Pearce, Cam & Cooper, Robyn  
Prosser, Josephine  
Shearer, Michael & Jo

### *In memory*

Cooper, Matthew

### *Pro Bono Supporters*

Allianz  
Cruickshank Rapid  
Finsbury Green

KPMG  
On Creative

### *Green \$50 to \$4,999*

Akers, Frank  
Alfa Laval  
Anasson, Rebecca  
Attana, Grace  
Bate, Rosalie  
Bennier, Boronia  
Bergin, Vanessa  
Bradshaw, Ian  
Braund, Nicholas  
Braund, Wendy  
Braund, Wilton  
Brigden, Emma  
Bullock, Tom  
Casserly, Nathan & Cooper, Rachel  
Clayfield, Alison  
Coad, Rosalie  
Conner, Doug  
Cooper, Dale  
Cooper, David (Gus)  
Cooper, Iain  
Cornwell, Susan  
Cross, Louise  
Dempsey, Greg  
Donaldson, Scott  
Drzal, Brett  
Duffield, Haydn & Lorraine  
Esposito, Paul & Suzanne  
Filsell, Claire  
Flumiani, Peter  
Forrest, Annette  
Gelly, Leanne  
Giglio, Corey  
Gillies, Rod  
Glynn, Anthony  
Grant, Carolyn  
Grunert, Brad  
Hacking, Todd  
Hanson, Irene  
Harris, Richard  
Hillier, Nigel & Anita  
Holstein Australia

Ionni, Peter  
Johnson, Penny  
Jones, David  
Loxton, Susan  
Matthews, Alison & Brian  
Matto, Renato  
Mazzagatti, Rocky & Nancy  
McConnell, Greg  
McMurtre, Brett  
Medlyn, David  
Merkel, Scott  
Midolo, Louise  
Moody, Willy & Gary  
Musolino, Rocco  
Nardi, Ross  
National Beer Can Collector Inc  
O'Donoghue, Steven  
Orchard, Ginta & David  
O'Sullivan, Chris  
O'Toole, Floyd  
Pengilly, Wendy  
Perrotta, Frank  
Pickering, Bettina  
Piper, Geoff & Trish  
Piper, Robert & Margaret  
Rankine, Phil  
Rendell, Jean  
Rossi, Maria  
Secomb, Sue  
Schmitz, Steve  
Siebels, Peter  
Stephens, Patricia  
Sternberg, Nick  
Stewart, Doug  
Tanner, David & Janet  
Tascione, Eric  
TRG  
van der Nieuwelaar, Sef  
van Ruth, John  
Weeks, Mark  
Wilson, Kimberly  
Zimmermann, Janie



## OPERATION FLINDERS

### *Finding a new path for youth*

"The program is having real success in providing a 'circuit-breaker' for teenagers who have found themselves on a negative pathway in life, giving them a chance to connect with positive role models and to set new personal goals."





## FOUNDATION HEAD OFFICE

Postal: PO Box 46, Regency Park SA 5942  
Head Office: 461 South Road,  
Regency Park SA 5010

T: 1300 664 344 F: 08 8440 1818  
E: [foundation@coopers.com.au](mailto:foundation@coopers.com.au)  
W: [www.coopers.com.au](http://www.coopers.com.au)